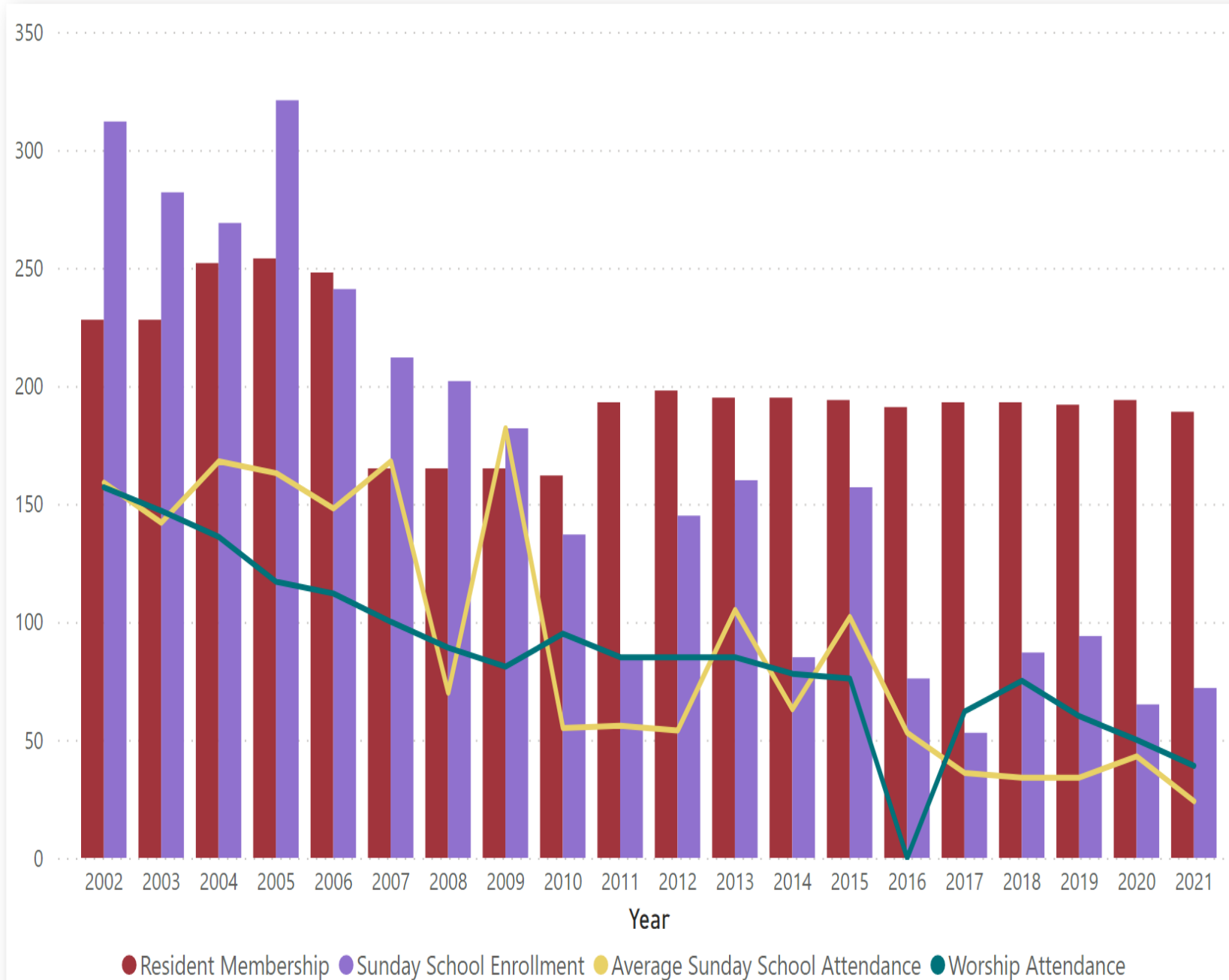


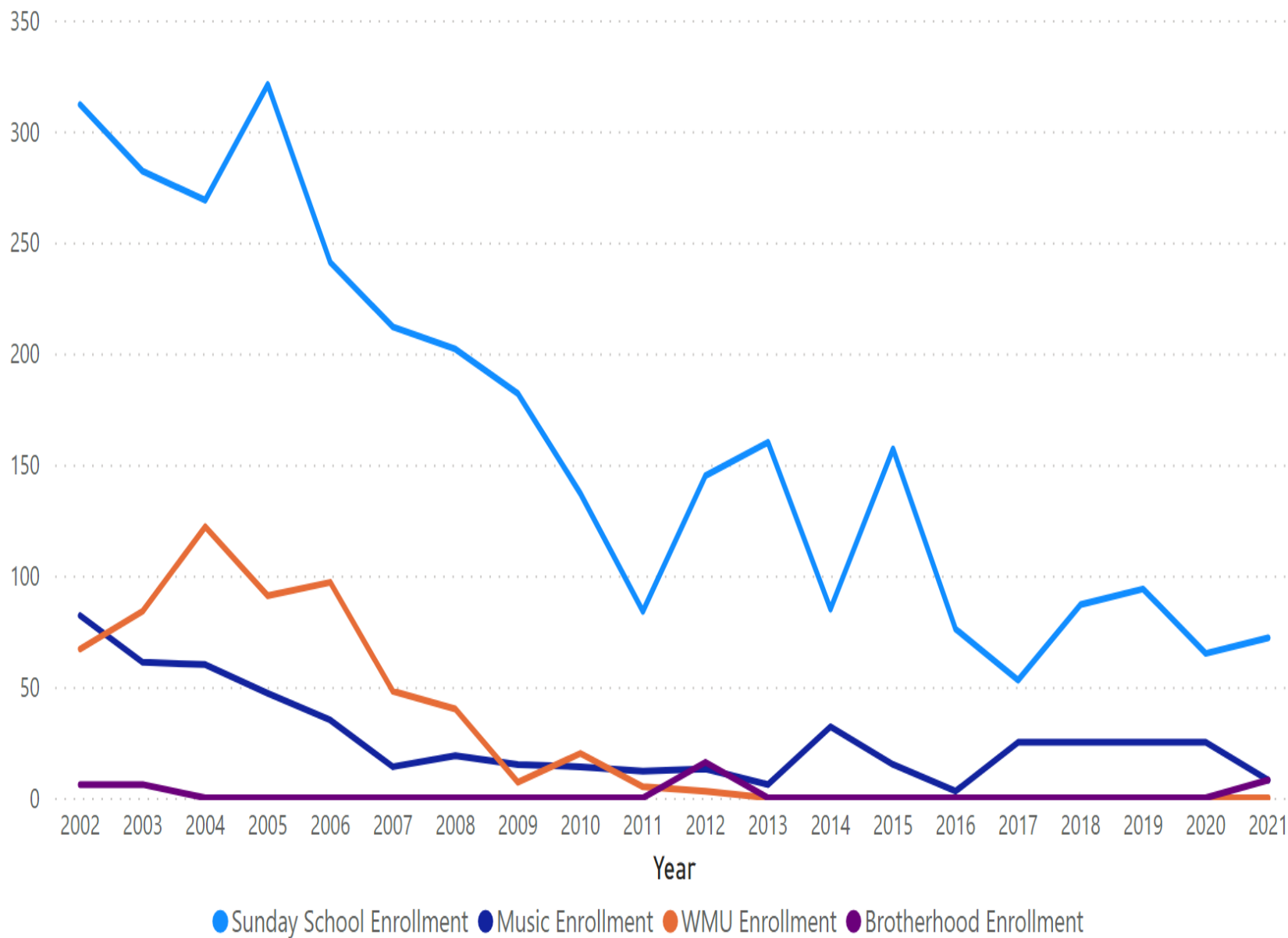
Pennsylvania Avenue Baptist Church *ACP History 2002- 2021*



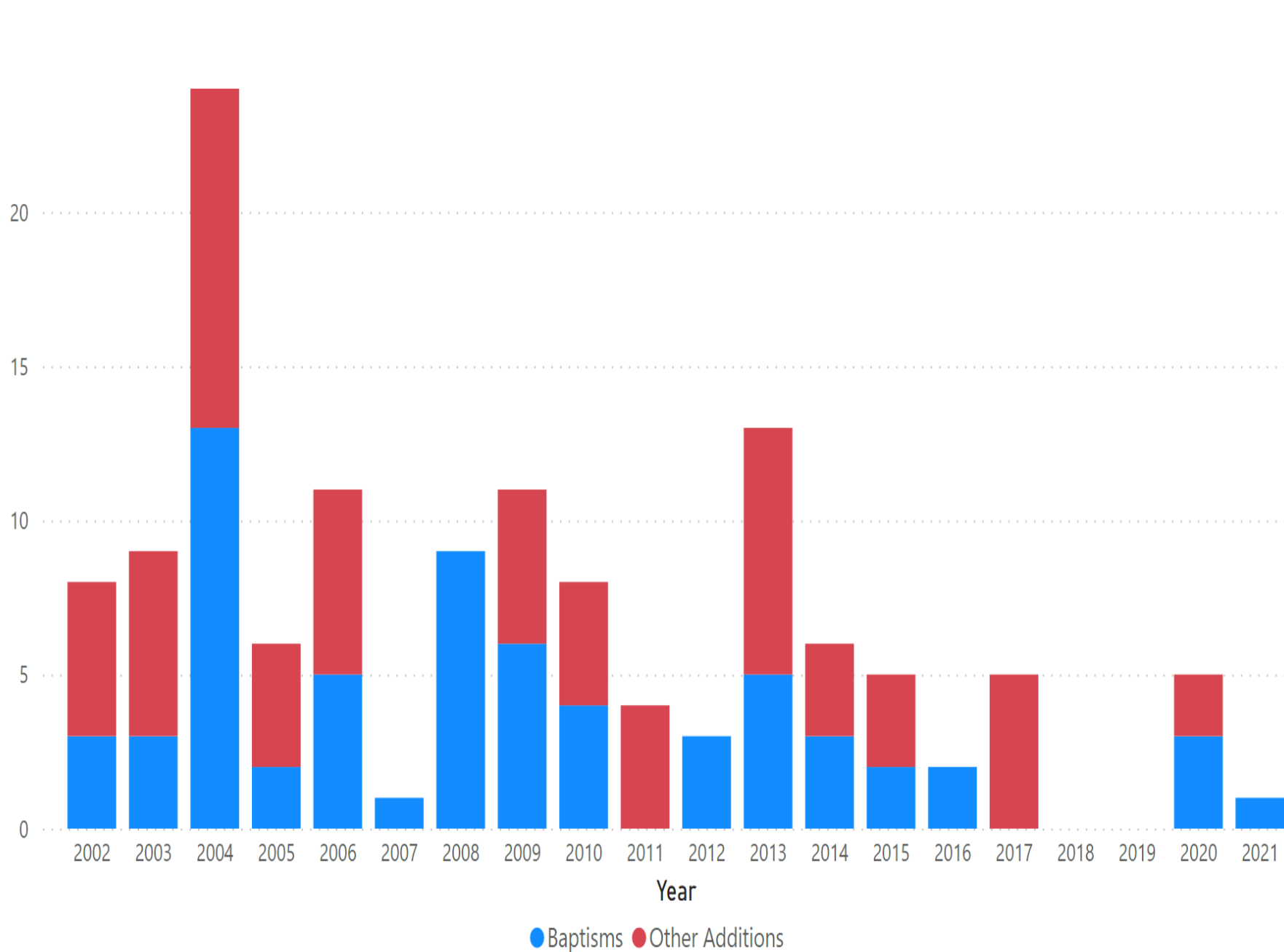
Year	Resident Membership	Sunday School	Average SS Attend.	Worship Attend.	Baptisms	Other Additions	Total Additions	Music	WMU	BH	Undesign Gifts	Cooperative Program	% Cooperative Program	Associational Missions	State Missions Offering	Annie Armstrong Offering	Lottie Moon Offering
▼																	
2021	189	72	24	39	1	0	1	8	0	8	\$174,708	\$11,431	6.54%	\$5,008	\$1,120	\$2,119.78	\$2,145
2020	194	65	43	50	3	2	5	25	0	0	\$174,784	\$11,779	6.74%	\$5,243	\$0	\$1,892	\$5,120
2019	192	94	34	60	0	0	0	25	0	0	\$155,437.52	\$10,996	7.07%	\$10,702	\$1,038	\$0	\$0
2018	193	87	34	75	0	0	0	25	0	0	\$161,873	\$11,948	7.38%	\$8,739	\$1,746	\$749	\$2,640
2017	193	53	36	62	0	5	5	25	0	0	\$160,277	\$9,998	6.24%	\$9,361	\$883	\$1,586	\$2,523
2016	191	76	53	0	2	0	2	3	0	0	\$169,927	\$11,750	6.91%	\$5,896	\$420	\$1,621	\$2,555
2015	194	157	102	76	2	3	5	15	0	0	\$164,314	\$11,609	7.07%	\$5,025	\$756	\$1,512	\$2,679
2014	195	85	63	78	3	3	6	32	0	0	\$178,608	\$11,749	6.58%	\$5,184	\$539	\$1,543.63	\$2,957
2013	195	160	105	85	5	8	13	6	0	0	\$180,137	\$12,995	7.21%	\$5,438	\$1,071	\$2,167	\$5,414
2012	198	145	54	85	3	0	3	13	3	16	\$220,772	\$14,952	6.77%	\$7,311	\$1,302	\$1,870.14	\$4,463
2011	193	84	56	85	0	4	4	12	5	0	\$223,182	\$16,039	7.19%	\$7,885	\$2,230	\$3,568.87	\$4,328
2010	162	137	55	95	4	4	8	14	20	0	\$35,725	\$16,510	46.21%	\$7,427	\$1,915	\$2,232	\$0
2009	165	182	182	81	6	5	11	15	7	0	\$214,942	\$14,930	6.95%	\$6,636	\$2,131	\$1,863	\$3,995
2008	165	202	70	89	9	0	9	19	40	0	\$194,956	\$13,456	6.90%	\$6,856	\$2,154	\$2,434	\$5,637
2007	165	212	168	100	1	0	1	14	48	0	\$209,274	\$16,638	7.95%	\$11,495	\$1,550	\$2,197.82	\$3,451
2006	248	241	148	112	5	6	11	35	97	0	\$215,250	\$14,779	6.87%	\$7,501	\$2,785	\$2,154.62	\$553
2005	254	321	163	117	2	4	6	47	91	0	\$229,750	\$18,046	7.85%	\$7,886	\$1,192	\$1,852	\$8,870
2004	252	269	168	136	13	11	24	60	122	0	\$211,274	\$16,823	7.96%	\$7,912	\$1,975	\$2,678.15	\$5,444
2003	228	282	142	147	3	6	9	61	84	6	\$236,488	\$18,028	7.62%	\$9,435	\$4,602	\$0	\$3,805
2002	228	312	159	157	3	5	8	82	67	6	\$254,387	\$18,741	7.37%	\$12,688	\$1,440	\$2,783	\$4,746



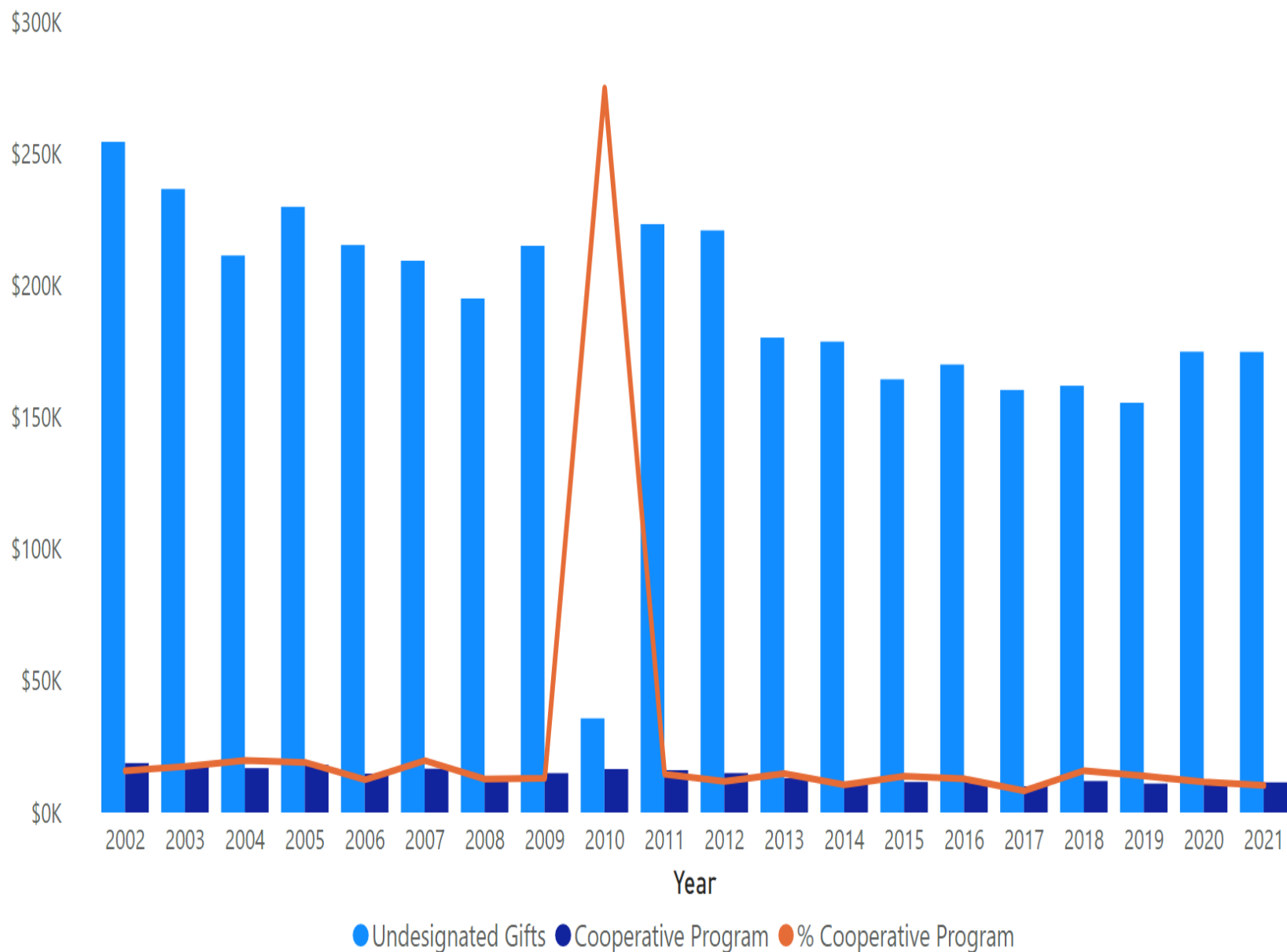
Year	Resident Membership	Sunday School Enrollment	Average Sunday School Attendance	Worship Attendance
2021	189	72	24	39
2020	194	65	43	50
2019	192	94	34	60
2018	193	87	34	75
2017	193	53	36	62
2016	191	76	53	0
2015	194	157	102	76
2014	195	85	63	78
2013	195	160	105	85
2012	198	145	54	85
2011	193	84	56	85
2010	162	137	55	95
2009	165	182	182	81
2008	165	202	70	89
2007	165	212	168	100
2006	248	241	148	112
2005	254	321	163	117
2004	252	269	168	136
2003	228	282	142	147
2002	228	312	159	157



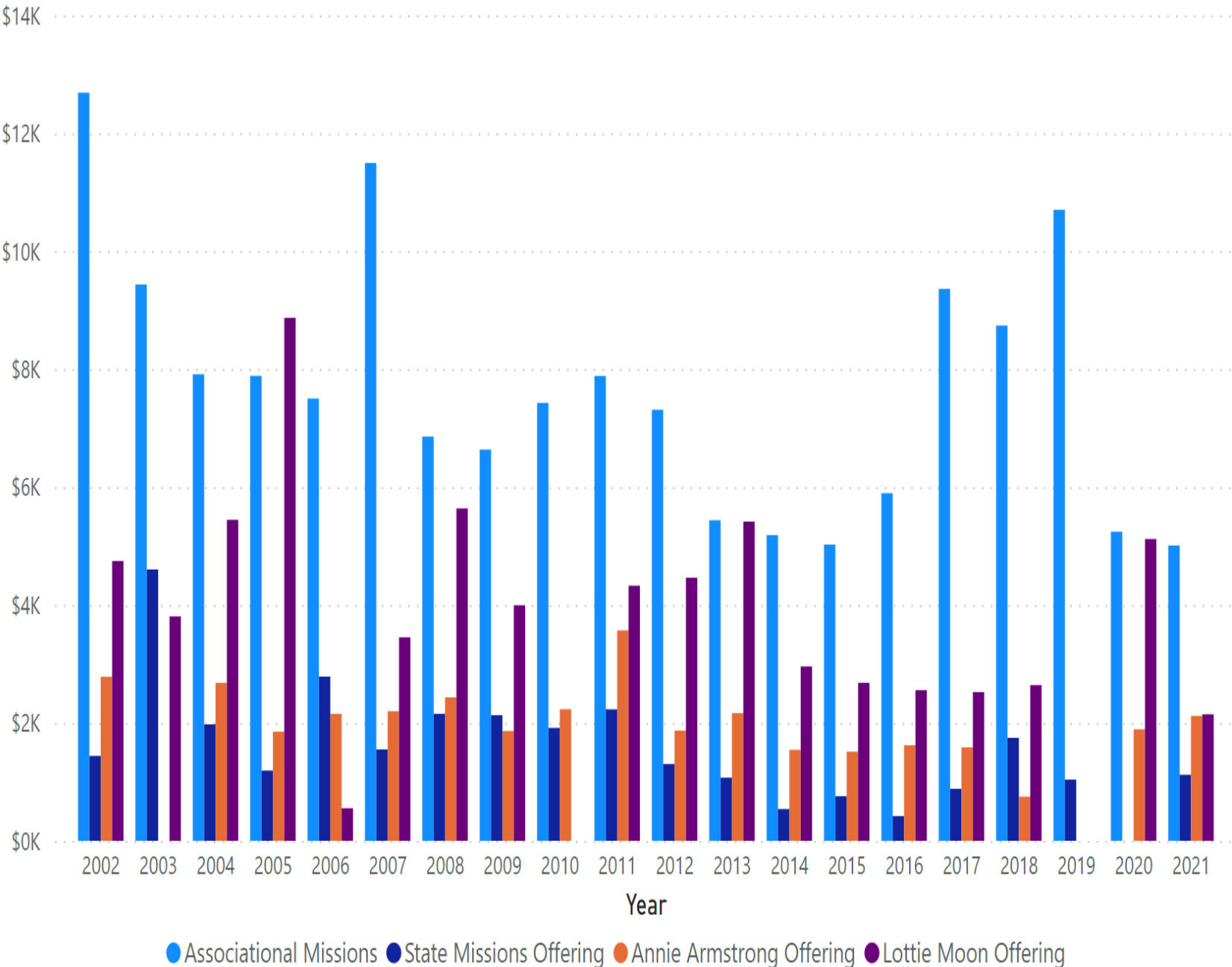
Year	Sunday School Enrollment	Music Enrollment	WMU Enrollment	Brotherhood Enrollment
2021	72	8	0	8
2020	65	25	0	0
2019	94	25	0	0
2018	87	25	0	0
2017	53	25	0	0
2016	76	3	0	0
2015	157	15	0	0
2014	85	32	0	0
2013	160	6	0	0
2012	145	13	3	16
2011	84	12	5	0
2010	137	14	20	0
2009	182	15	7	0
2008	202	19	40	0
2007	212	14	48	0
2006	241	35	97	0
2005	321	47	91	0
2004	269	60	122	0
2003	282	61	84	6
2002	312	82	67	6



Year	Baptisms	Other Additions	Total Additions
2021	1	0	1
2020	3	2	5
2019	0	0	0
2018	0	0	0
2017	0	5	5
2016	2	0	2
2015	2	3	5
2014	3	3	6
2013	5	8	13
2012	3	0	3
2011	0	4	4
2010	4	4	8
2009	6	5	11
2008	9	0	9
2007	1	0	1
2006	5	6	11
2005	2	4	6
2004	13	11	24
2003	3	6	9
2002	3	5	8



	Year	Undesignated Gifts	Cooperative Programs	% Cooperative Program
50%	2021	\$174,708	\$11,431	6.54%
	2020	\$174,784	\$11,779	6.74%
40%	2019	\$155,437.52	\$10,996	7.07%
	2018	\$161,873	\$11,948	7.38%
	2017	\$160,277	\$9,998	6.24%
	2016	\$169,927	\$11,750	6.91%
30%	2015	\$164,314	\$11,609	7.07%
	2014	\$178,608	\$11,749	6.58%
	2013	\$180,137	\$12,995	7.21%
	2012	\$220,772	\$14,952	6.77%
20%	2011	\$223,182	\$16,039	7.19%
	2010	\$35,725	\$16,510	46.21%
	2009	\$214,942	\$14,930	6.95%
	2008	\$194,956	\$13,456	6.90%
10%	2007	\$209,274	\$16,638	7.95%
	2006	\$215,250	\$14,779	6.87%
	2005	\$229,750	\$18,046	7.85%
	2004	\$211,274	\$16,823	7.96%
	2003	\$236,488	\$18,028	7.62%
	2002	\$254,387	\$18,741	7.37%



Year	Associational Missions	State Missions Offering	Annie Armstrong Offering	Lottie Moon Offering
2021	\$5,008	\$1,120	\$2,119.78	\$2,145
2020	\$5,243	\$0	\$1,892	\$5,120
2019	\$10,702	\$1,038	\$0	\$0
2018	\$8,739	\$1,746	\$749	\$2,640
2017	\$9,361	\$883	\$1,586	\$2,523
2016	\$5,896	\$420	\$1,621	\$2,555
2015	\$5,025	\$756	\$1,512	\$2,679
2014	\$5,184	\$539	\$1,543.63	\$2,957
2013	\$5,438	\$1,071	\$2,167	\$5,414
2012	\$7,311	\$1,302	\$1,870.14	\$4,463
2011	\$7,885	\$2,230	\$3,568.87	\$4,328
2010	\$7,427	\$1,915	\$2,232	\$0
2009	\$6,636	\$2,131	\$1,863	\$3,995
2008	\$6,856	\$2,154	\$2,434	\$5,637
2007	\$11,495	\$1,550	\$2,197.82	\$3,451
2006	\$7,501	\$2,785	\$2,154.62	\$553
2005	\$7,886	\$1,192	\$1,852	\$8,870
2004	\$7,912	\$1,975	\$2,678.15	\$5,444
2003	\$9,435	\$4,602	\$0	\$3,805
2002	\$12,688	\$1,440	\$2,783	\$4,746